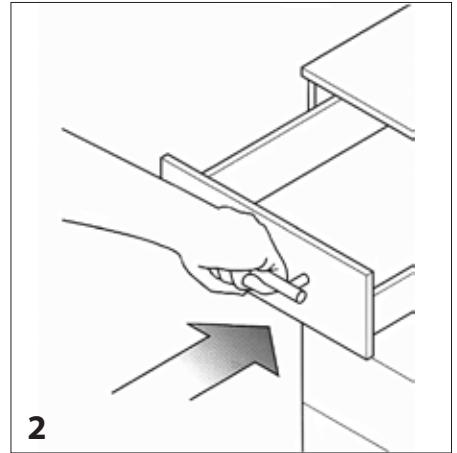
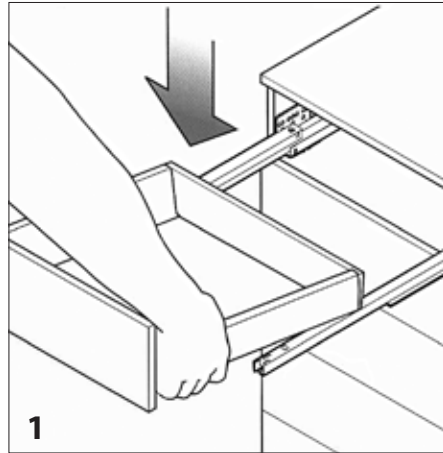


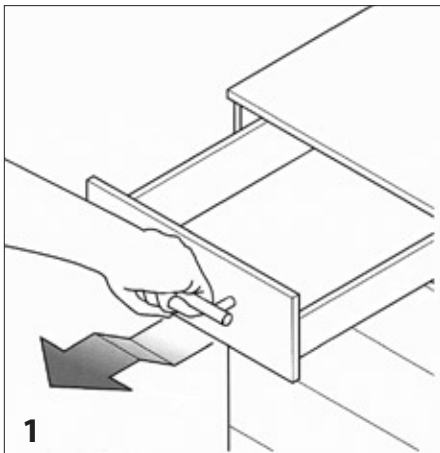
# Metal drawer box adjustments

## DRAWER INSERTION

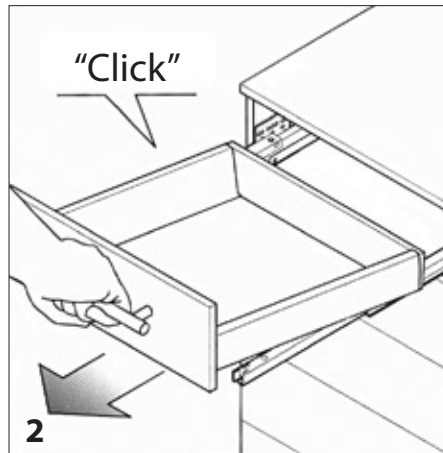
1. Place onto extended slides.
2. Raise gently at the front and close. Will lock into guides when fully closed.



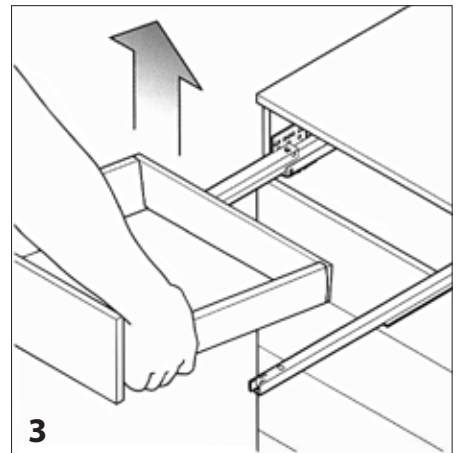
## DRAWER REMOVAL



Open drawer and raise slightly approx. 10cm before fully extended.

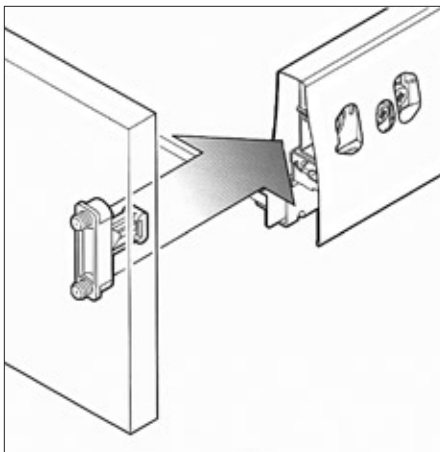


Lift when extended and pull out horizontally.



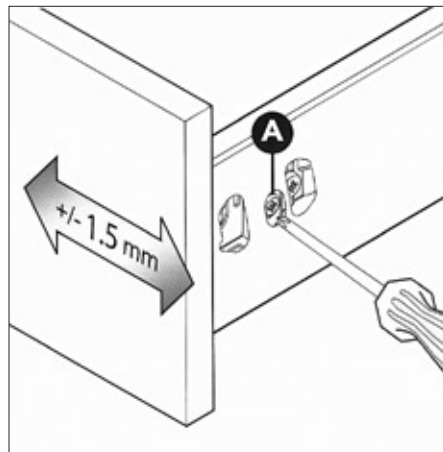
Lift drawer up off the slides.

## DRAWER FRONT MOUNTING



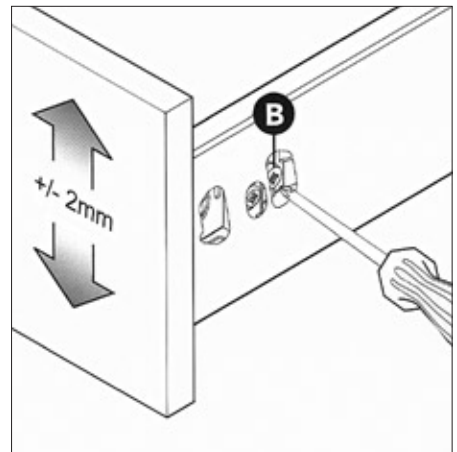
Insert front holder into drawer. Drawer front snaps into place.

## SIDE ADJUSTMENT



Turn screw (A) - make adjustment to right side of drawer only.

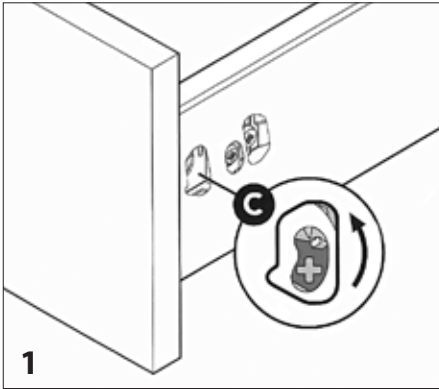
## HEIGHT ADJUSTMENT



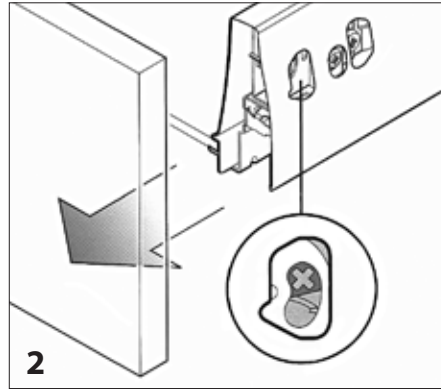
Loosen screw (B) on both sides, adjust height and retighten.

# Metal drawer box adjustments

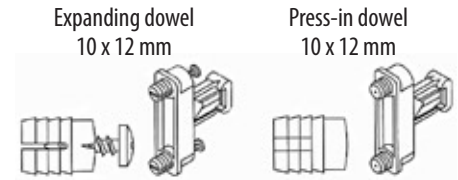
## DRAWER FRONT REMOVAL



1  
Loosen with Pozi driver #2.



2  
Loosen bottom/front connector (if used) and remove drawer front.



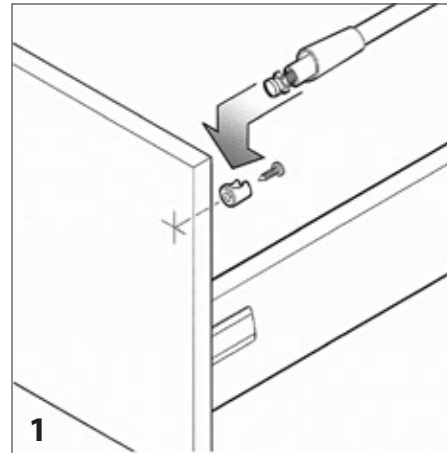
Front fastening with press-in dowels.

When using front fittings with press-in dowels, the front bores must be countersunk. The sharp bore edges produced with hard surface coatings (e.g. melamine) can damage dowel protrusions when pressed in, reducing holding strength. Front fixings with expanding dowels do not require any countersinking and preserves optimal holding strength.

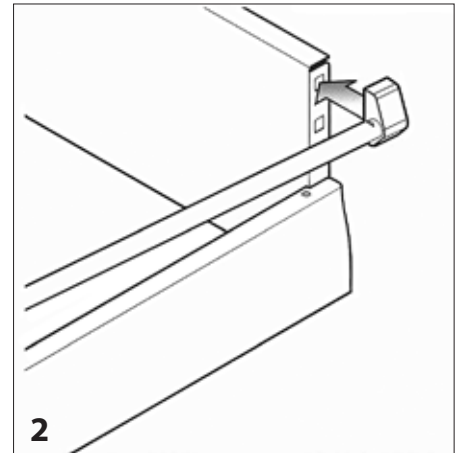
## SCREW-ON RAILING



## MOUNTING

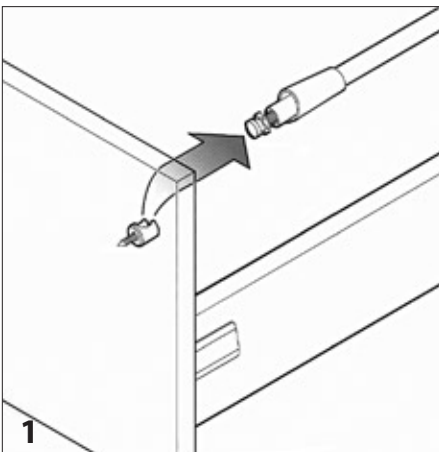


1  
Screw onto both sides of drawer front and insert dividing rail.

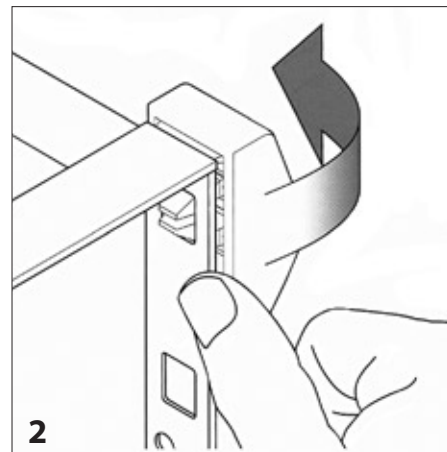


2  
Click onto both sides of drawer back.

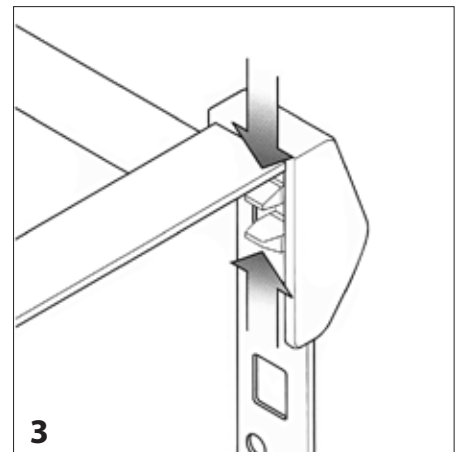
## REMOVAL



1  
Loosen front fixing.



2  
Take off rail from wooden back adapter.



3  
Squeeze release tabs.