

# Rift White Oak



Sky Valley offers more standard combinations of door styles, wood species and colors than most other cabinet companies, and our custom options give you unmatched flexibility. We also offer a number of "green" cabinetry options, and you can order it all with fixed lead times of as little as four weeks...



**SKY VALLEY**  
CABINETRY

Sky Valley Cabinetry  
16726 Tye St SE  
Monroe, WA 98272

P: 800-282-9231  
F: 800-787-0131

[www.skyvalleycabinetry.com](http://www.skyvalleycabinetry.com)

Primarily grown in the Eastern U.S. and Southeastern Canada, White Oak is a heavy, strong wood. Rift cutting, or cutting at an angle to the grain, creates a straight grain pattern with very little of the open, "swirly" grain found in our quarter-sawn Red Oak.

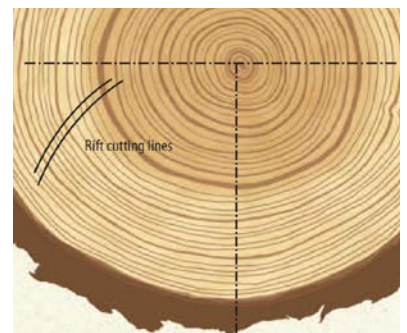
Rift White Oak (RWO) features light-colored sapwood and light grey to dark

brown heartwood, which can appear together on the same board. It is mostly straight grained with a medium to coarse texture, and may include mineral streaks and small pin knots.

Rift White Oak is offered in our Euro custom frameless line, and on the Vista door style for Katana value frameless.



While RWO shares the same characteristics for strength and durability that Red Oak is known for, the milling process creates a very different grain pattern. RWO, at far left, is much straighter grained, without the loops & swirls of Red Oak.



Logs are quartered and boards are sawn at an angle